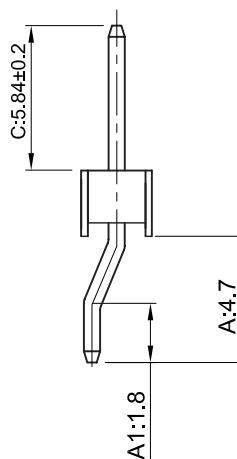
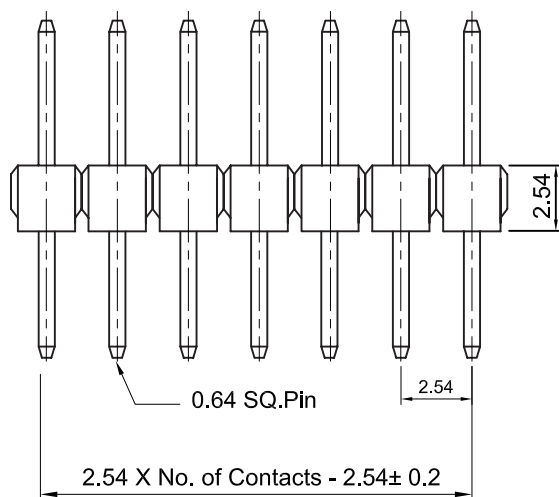
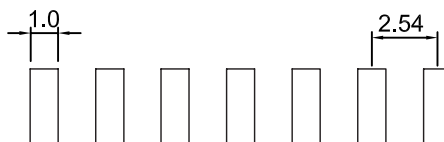
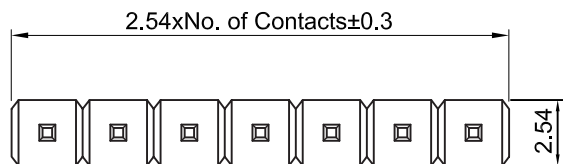


Recommended P.C. Board SMD Layout



Specifications

Current Rating: 3 Amps
 Insulator Resistance: 1000 Megohms min.
 Contact Resistance: 20 m ohms max.
 Dielectric Withstanding: AC 600V
 Operating Temperature: -40°C ~ +105°C
 Contact Material: Brass
 Insulator Material: Polyester, UL 94V-0, Nylon-6T
 Contact Plated: See Option / Standard: Full Gold Flash

Part Numbering System

SSHHC - XX - XX - X X X N

Series

No. of Pins

Terminal Code

Code	A1	A	C
01	1.80	4.70	5.84
09	2.03	4.57	5.84
11	1.60	3.00	6.00
12	1.60	3.00	5.84
XX	Custom: Please specify the A1, A & C dimensions, the code will be provided upon ordering.		

Contact Plating

Insulator Material:

N = High Temperature Nylon-6T

Packing Method:

B = Tube
T = Tape & Reel

Cap Option:

Nil = No Cap
P = Plastic Cap

Example: SSHHC-12-01-GFBN
with 12pins, A1 = 1.80, A = 4.70, C = 5.84

* Contact Plating Option	Full Gold Plating	Gold Plated on Contact Area Tin Plated on Solder Area	Full Tin Plating
	G : Gold Flash G10: Gold 10u" G15: Gold 15u" G30: Gold 30u"	S: Gold Flash S10: Gold 10u" S15: Gold 15u" S30: Gold 30u"	T: Tin 100u"

General Tolerance	
X. ± 0.50	X.° ± 5°
.X ± 0.20	.X° ± 2°
.XX ± 0.10	.XX° ± 1°
Units : mm	